

Professor Inking - Felt Mask



Cut the following pieces in felt

- A: Three in pink
- B: Set of three in dark pink
- C: One in white
- D: One in dark pink
- E: One in black

You will also need:

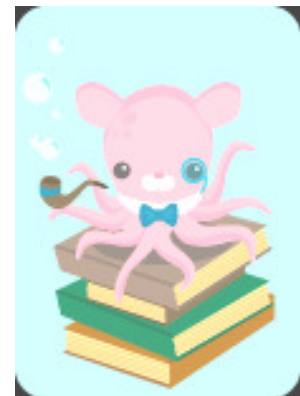
Up to 11 inches of thin elastic

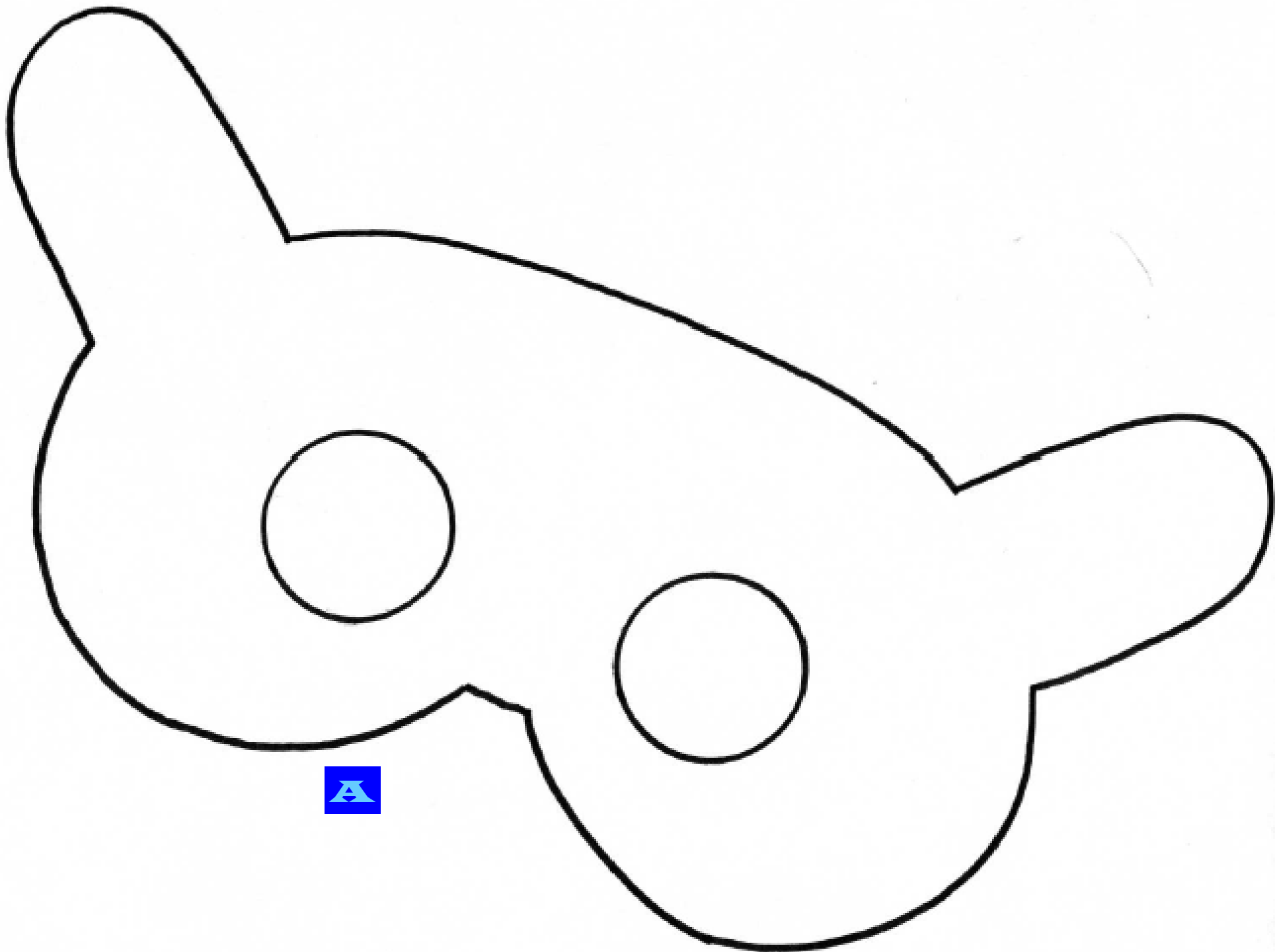
Instructions:

The face

1. Attach part B, the set of three dark pink spots, to one layer of piece A.
2. Attach part E, the monocle, to the same layer.
3. Position the other two face pieces (part A) behind the front piece.
4. Place elastic at the mid eye level, between the back two layers. Pin the elastic to the other pieces, about half an inch into the mask
5. Stitch together.
6. Stitch around the eyes.
7. Attach the dark pink nose to the white pink nose.
8. Attach the nose to Inking's face.

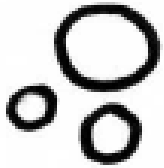
Put mask on and go check your books!



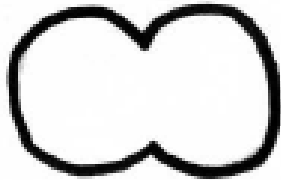


A

B



C



D



E

